

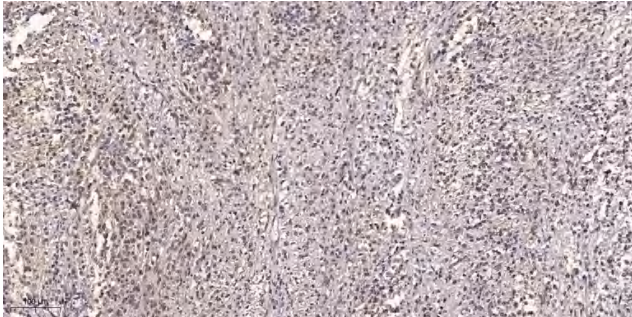


# GBP5 Polyclonal Antibody

<b>Catalog No</b>	YP-Ab-16162
<b>Isotype</b>	IgG
<b>Reactivity</b>	Human;Rat;Mouse;
<b>Applications</b>	IHC;IF;WB;ELISA
<b>Gene Name</b>	GBP5
<b>Protein Name</b>	Guanylate-binding protein 5
<b>Immunogen</b>	Synthesized peptide derived from the Internal region of human GBP5.
<b>Specificity</b>	GBP5 Polyclonal Antibody detects endogenous levels of GBP5 protein.
<b>Formulation</b>	Liquid in PBS containing 50% glycerol, 0.5% BSA and 0.02% sodium azide.
<b>Source</b>	Polyclonal, Rabbit,IgG
<b>Purification</b>	The antibody was affinity-purified from rabbit antiserum by affinity-chromatography using epitope-specific immunogen.
<b>Dilution</b>	WB 1:500-2000 IHC: 1/100 - 1/300. ELISA: 1/20000.. IF 1:50-200
<b>Concentration</b>	1 mg/ml
<b>Purity</b>	≥90%
<b>Storage Stability</b>	-20°C/1 year
<b>Synonyms</b>	GBP5; Guanylate-binding protein 5; GBP-TA antigen; GTP-binding protein 5; GBP-5; Guanine nucleotide-binding protein 5
<b>Observed Band</b>	66kD
<b>Cell Pathway</b>	Cytoplasm . Golgi apparatus membrane ; Lipid-anchor . Cytoplasmic vesicle .
<b>Tissue Specificity</b>	Expressed in peripheral blood monocytes (at protein level).
<b>Function</b>	similarity:Belongs to the GBP family.,
<b>Background</b>	similarity:Belongs to the GBP family.,
<b>matters needing attention</b>	Avoid repeated freezing and thawing!
<b>Usage suggestions</b>	This product can be used in immunological reaction related experiments. For more information, please consult technical personnel.



## Products Images



Immunohistochemical analysis of paraffin-embedded human small intestinal carcinoma tissue. 1,primary Antibody was diluted at 1:200(4° overnight). 2, Sodium citrate pH 6.0 was used for antigen retrieval(>98° C,20min). 3,Secondary antibody was diluted at 1:200